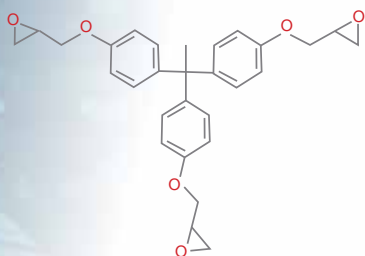


► Chemical Structures

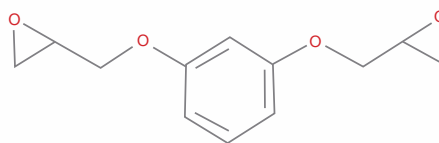
MULTIFUNCTIONAL EPOXY



EPALLOY® 9000

Tris hydroxyl phenyl ethane
CAS no: 87093-13-8

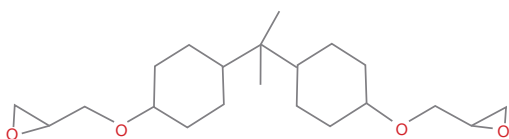
RESORCINOL EPOXY RESIN



ERISYS™ RDGE, RDGE-H

Resorcinol diglycidyl ether
CAS no: 101-90-6

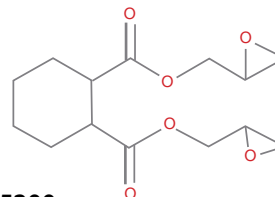
HYDROGENATED BISPHENOL A EPOXY RESIN



EPALLOY® 5000

Hydrogenated Bisphenol-A diglycidyl ether
CAS no: 30583-72-3

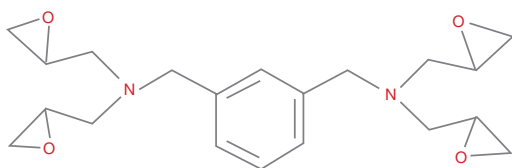
CYCLOALIPHATIC GLYCIDYL ESTER



EPALLOY® 5200

Hexahydro phthalic acid diglycidyl ester
CAS no: 5493-45-8

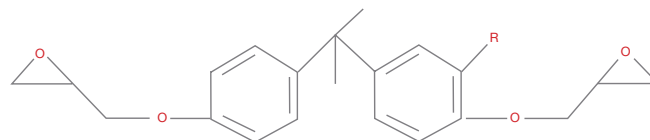
GLYCIDYL AMINE



ERISYS™ GA 240

Glycidyl amine of m-xylenediamine
CAS no: 63738-22-7

MODIFIED BISPHENOL A EPOXY RESIN



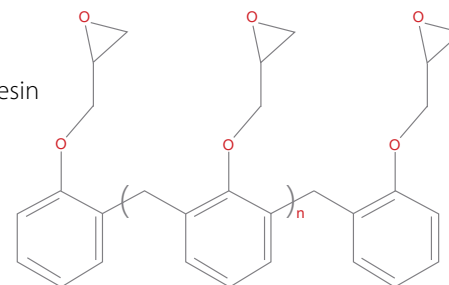
EPALLOY® 7200

Modified Bisphenol-A diglycidyl ether

PHENOL NOVOLAC EPOXY RESINS

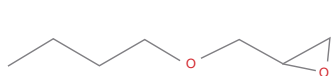
EPALLOY® 8000 Series

Phenol novolac epoxy resin



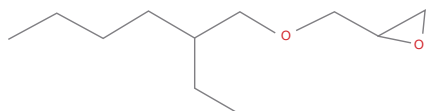
► Chemical Structures (cont.)

ALIPHATIC MONOGLYCIDYL ETHERS



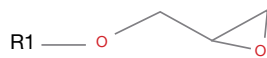
ERISYS™ GE 5

n-Butyl glycidyl ether
CAS no: 2426-08-6



ERISYS™ GE 6

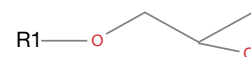
2-Ethyl hexyl glycidyl ether
CAS no: 2461-15-6



R1 = C8-C10

ERISYS™ GE 7

C₈-C₁₀- glycidyl ether
CAS no: 68609-96-1

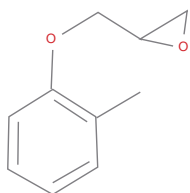


R1 = C12-C14

ERISYS™ GE 8

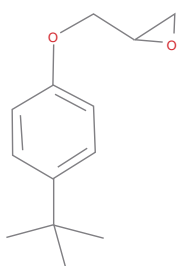
C₁₂-C₁₄ glycidyl ether
CAS no: 68609-97-2

AROMATIC MONOGLYCIDYL ETHERS



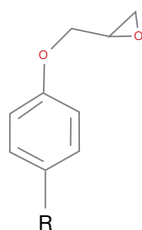
ERISYS™ GE 10

Cresyl glycidyl ether
CAS no: 2210-79-9



ERISYS™ GE 11

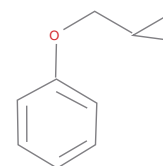
p-tert butyl glycidyl ether
CAS no: 3101-60-8



R = C₉H₁₉

ERISYS™ GE 12

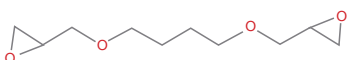
Nonyl phenyl glycidyl ether
CAS no: 147094-54-0



ERISYS™ GE 13

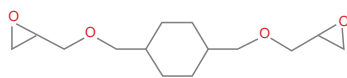
Phenyl glycidyl ether
CAS no: 122-60-1

ALIPHATIC DIGLYCIDYL ETHER MODIFIERS



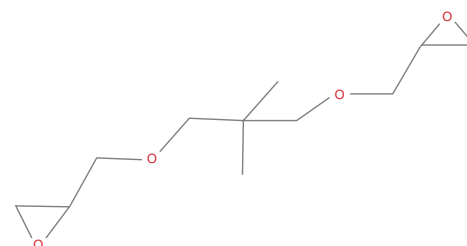
ERISYS™ GE 21

1,4-Butanediol diglycidyl ether
CAS no: 2425-79-8



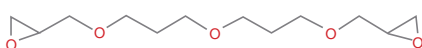
ERISYS™ GE 22 & 22S

1,4-Cyclohexane dimethanol
diglycidyl ether
CAS no: 14228-73-0



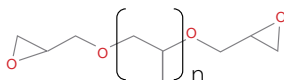
ERISYS™ GE 20

Neopentyl glycol diglycidyl ether
CAS no: 17557-23-2



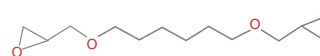
ERISYS™ GE 23

Dipropylene glycol diglycidyl ether
CAS no: 41638-13-5



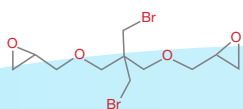
ERISYS™ GE 24

Polypropylene glycol(400)
diglycidyl ether
CAS no: 26142-30-3



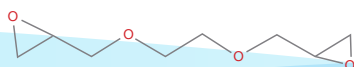
ERISYS™ GE 25

1,6-Hexanediol diglycidyl ether
CAS no: 16096-31-4



ERISYS™ GE 29

Dibromo Neopentyl glycol diglycidyl
ether
CAS no: 31452-80-9

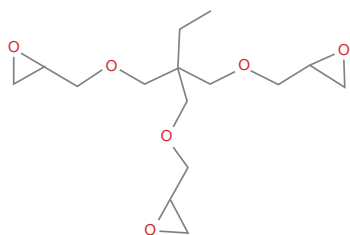


ERISYS™ EGDGE

Ethylene glycol diglycidyl ether
CAS no: 2224-15-9

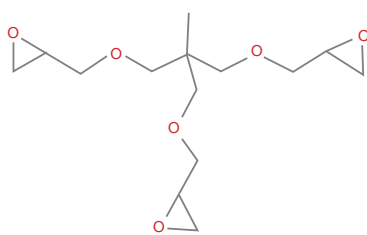
► Chemical Structures (cont.)

ALIPHATIC TRIGLYCIDYL ETHER MODIFIERS



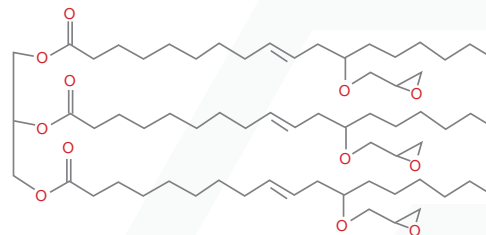
ERISYS™ GE 30

Trimethylol propane triglycidyl ether
CAS no: 30499-70-8



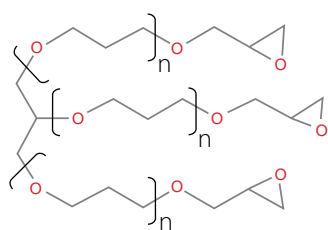
ERISYS™ GE 31

Trimethylol ethane triglycidyl ether
CAS no: 68460-21-9



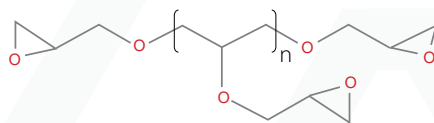
ERISYS™ GE 35 & 35H

Castor oil glycidyl ether
CAS no: 74398-71-3



ERISYS™ GE 36

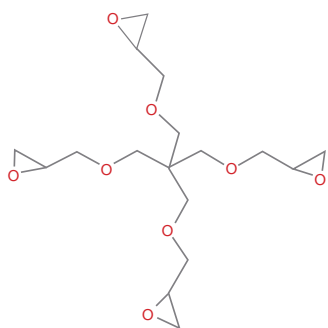
Propoxylated glycol triglycidyl ether
CAS no: 37237-76-6
Approximate MW = 2000



ERISYS™ GE 38

Poly glycerol-3- polyglycidyl ether
CAS no: 118549-88-5

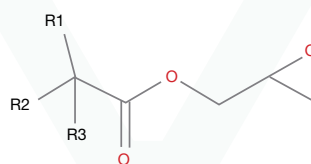
POLYFUNCTIONAL GLYCIDYL ETHER



ERISYS™ GE 40

Pentaerythritol polyglycidyl ether
CAS no: 30973-88-7

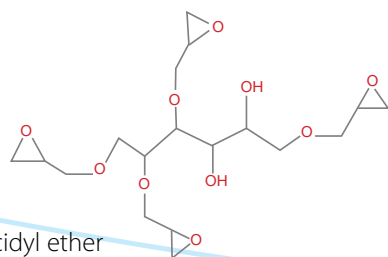
GLYCIDYL ESTER MODIFIERS



R1=1, R2+R3= 7

ERISYS™ GS 110

Glycidyl ester of neodecanoic acid
CAS no: 26761-45-5



ERISYS™ GE 60

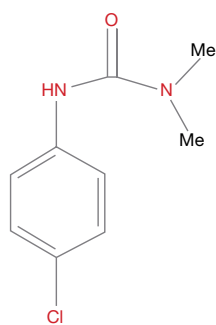
Sorbitol polyglycidyl ether
CAS no: 68412-01-1



► **Chemical Structures (cont.)**
OMICURE™ SUBSTITUTED UREA ACCELERATORS

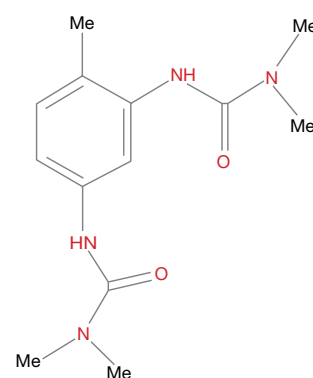
OMICURE™ U-210

CAS no: 150-68-5



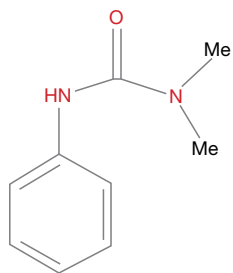
OMICURE™ U-24

CAS no: 17526-94-2



OMICURE™ U-405

CAS no: 101-42-8



OMICURE™ U-52/U-415

CAS no: 10097-09-3

